

## Table of Contents

*\*Prices and availability subject to change without notice. Please contact us for current availability and prices. Prices on the signs in the sales yard are the most recent and correct.*

About Us & Policies	Page 2
Maintaining New Lawn & Plants	Page 3
Service Charges & Policies	Page 4
Bark & Stone	Page 5-6
Soils & Composts	Pages 7
Lawn Grass (Seed & Sod)	Page 7
Matting & Edging	Page 7
Fertilizers & Amendments	Page 7
Evergreens	Pages 8-9
Broadleaf Evergreens	Pages 9-10
Shrubs and Grafted Treeforms	Pages 10-14
Vines	Page 15
Roses	Page 15
Perennials & Groundcover	Pages 16-19
Ornamental Grasses	Page 19
Fruit Trees	Pages 20
Ornamental Trees	Pages 21-22
Shade Trees	Pages 22-24
Ways to Save at Willems	Page 24
Before You Visit Us & Hours	Page 25
How & When to Trim Shrubs & Trees	Page 26
Fruit Tree Pollinators	Page 27-28
Map of Sales Yard	Page 29-30
Paver Installation Tips	Page 30
Deer Resistant Plants	Page 31
Plants for Wet Areas	Page 31
Plants for Shady Areas	Page 32
Tree Color Codes	Page 33
Calculating Cubic Yardage	Page 34

## About Us & Policies

**Warranties:** All plant material (except for perennials/annuals/as marked) are guaranteed for one full year from date of purchase. You must have your receipt and dead plant material to exchange for credit only. Returned plants will be inspected to determine acceptability. Warranties do not apply to **wholesale purchases**.

**Estimates:** Estimates are free, with no obligation to purchase items from our company. However, appointments fill up quickly, so plan accordingly. We reserve the right to solicit customer requests to other landscaping companies.

**Payment:** We do accept credit or debit cards, as well as cash or checks. We can also bill you if there are no outstanding debts with our company.

**Wholesale Purchases:** Owners will be required to provide proof of business ownership. This discount does not apply to **topsoil, garden mix or delivered items**. Plant material is not warranted when purchased wholesale. Failure to make payments in a timely matter will result in wholesale rights being revoked. A seller permit number/tax exempt number must be on file prior to making tax-exempt purchases. Contractors must be present with customers, as we are unable to take care of your customers. Discount is non-transferable (not extended to relatives, friends etc.). Failure to comply with these policies may result in revoking of wholesale status. Past-due invoices will incur finance charge monthly after the first month, and every month after until the invoice is completely paid. If no payment after 90 days, invoice will be sent to collections.

### COMPANY POLICIES:

These are the policies for making purchases at Willems Landscape Service, Inc. Please take time to read through this section, particularly if you are a landscape contractor. If you have any questions regarding our policies, please feel free to ask.

Willems Landscape Service, Inc. is one of the Green Bay area's



major suppliers of landscape service and materials. We provide these services for both residential and commercial sites, from planning, to planting. Besides offering a large and ever-changing selection of plants and materials, we also offer free estimates, suggestions from our knowledgeable staff, and delivery on materials. For more info, call us at -336-1749 or go to **WillemsLandscape.com**.

## **Maintenance Required For New Grass & Plants**

### **For Seeded Lawns:**

When planting seed, make sure the soil is not too compact. Loose soil consisting of particles from a quarter to one inch. Gently rake the seed into the topsoil, do not bury it. Your seeded lawn needs to be watered in each section for at least 30 minutes for proper saturation. Over-watering a seeded area can result in wash-out, so take care to monitor areas for standing water. After one month, the lawn is ready for its first cutting. Set the lawn mower at its highest setting when cutting for the first time. Subsequent cuttings can be lower, but remember that keeping the grass higher keeps the ground moist and the lawn greener and weed-free. Do not apply any weed killer for one year from the time of seeding. Follow the fertilizing schedule of once a month during the growing season from May-October. Use as starter fertilizer with an analysis 10-10-10 in the spring, then 10-10-10 each month, with a final application of 10-10-10 in the fall.

### **For Sod Lawns:**

Sod requires a greater amount of water compared to seeded lawns. Keep the lawn well-saturated for 14 days after installation, until the grass roots into the existing ground. Watering sod areas for two hours every day will be adequate. It is almost impossible to over-water sod. Use impact-head sprinklers when watering for the best, most-even coverage when watering. You can reduce the watering after two weeks, and begin cutting if the grass is well-rooted to the existing soil. The grass in the sod is at least a year old, so it can be treated like a year-old established lawn for fertilizing. Follow the fertilizing schedule above for keeping your lawn healthy.

### **For New Shrubs:**

Newly planted shrubs need watering about once a week. One gallon of water per week is sufficient for most situations. Put the hose close to the ground, to maximize water usage. Make sure the area is soaked with water, as various soil types require different frequencies and amounts of water. If planted by us, the shrub(s) will have been planted with a slow-release fertilizer that will fertilize the shrubs for a minimum of three years. Do not trim any live branches until the following year, preferably the following autumn. Any dead branches can be trimmed immediately after planting. Please see the pruning guide on the next page for more information. In the fall, watering can be less frequent, giving the tree one final watering before winter. The following year, it is not necessary to water the tree, as natural rain water should take care of the plant, except for unusually hot and dry weather. In these cases, follow the directions above until the period of drought has passed.

### **For New Trees:**

Newly planted potted trees need to be watered about a gallon once a week, up to twice a week during hot, dry weather. Put the hose close to the ground, to maximize water usage. Make sure the immediate ground around the tree is saturated after each watering. Balled and burlapped trees need to be watered about five gallons once a month, or twice a month during hot and dry times of the year. If planted by us, the tree(s) have been treated with a slow-release fertilizer that will fertilize the tree for a minimum of three years. Do not trim any live branches until the following year, preferably the following autumn. Dead branches can be pruned at any time. In the fall, watering can be less frequent, giving the tree one final watering before winter. The following year, it is not necessary to water the tree, as natural rain water should take care of the plant, except for unusually hot and dry weather. In these cases, follow the directions above until the period of drought has passed.

## SERVICE CHARGES FOR DELIVERIES & INSTALLATION

Planting of Potted Shrub	<b>\$100.00 per shrub</b>
Planting of Potted Evergreens & Trees	<b>\$100.00 per tree</b>
Planting of B&B Trees	<b>\$200.00 per tree</b>
Delivery of Sod (no minimum)	<b>\$100.00 per truckload</b>
Delivery of Potted Plants	<b>\$100 per truckload</b>
Delivery of B&B Trees	<b>\$100 per tree</b>
Delivery of Mulch/Stone/Soil (\$120 min order)	<b>\$50.00</b> (No split loads)

(No wholesale discount on delivered items)

*Please note: There will be additional charges for extra services, such as additional soil or mulch when planting, tree staking, and/or delivery outside our regular service area.*

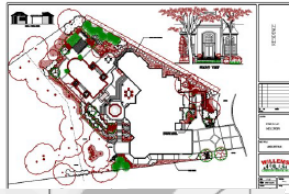
Please give at least a one-day notice for planting or delivery. Delivery of B&B trees includes us carting the tree to your pre-dug hole/planting area and setting the tree in the hole. **Customer is responsible for having site marked by Diggers Hotline before we plant.** Contact Diggers' Hotline by calling 811 or online at [www.diggershotline.com](http://www.diggershotline.com).

### Other Services

Besides outstanding landscape work, we also do snow removal and sanding and/or salting during the winter. We limit residential service to the east side. We do not offer yard maintenance services, but can recommend companies for tree trimming, removal, lawn cutting or fertilizing, shrub pruning, etc.

### Estimate & Design Services

Want your landscape professionally designed? Contact our design team to set up an appointment. Whether you're having us install it, or doing it yourself, we can create a custom design that addresses all your concerns and works best for your project's location. Estimates are free of charge.



Regular delivery price within  
11 miles of us.  
Additional fee outside regular  
delivery area.



Our delivery trucks can hold 8 cubic yards of soil or stone, or 20 cubic yards of wood mulch.

## Bark and Stone

\*\*Minimum Delivery Order– \$120.00\*\* (more info page 3) and  
**Delivery Charge (no free delivery)** Pictures of the mulches and stones at  
*WillemsLandscape.com* under the Stone/Mulches tab

### Bark Mulch (1 cubic yard covers 100 sq ft @ 3" deep)

<b>Black Mulch</b> (chipped dyed black) (Minimum Delivery 3cy)	<b>\$40.00/cu yd.</b> \$4.00/5 gal. \$20.00/30 gal.
<b>Cedar Bark Mulch</b> (natural shredded) (Minimum Delivery 3.4cy)	<b>\$40.00/cu yd</b> \$4.00/5 gal. \$20.00/30 gal.
<b>Chocolate Mulch</b> (dyed brown chipped) (Minimum Delivery 3cy)	<b>\$40.00/cu yd.</b> \$4.00/5 gal. \$20.00/30 gal.
<b>Coffee Mulch</b> (dyed dark brown chipped) (Minimum Delivery 3cy)	<b>\$40.00/cu yd.</b> \$4.00/5 gal. \$20.00/30 gal.
<b>Hardwood Bark Mulch</b> (natural shredded) (Minimum Delivery 3.6cy)	<b>\$35.00/cu yd.</b> \$3.50/5 gal. \$17.50/30 gal.
<b>Playground Chips Mulch</b> (undyed cedar&pine) (Minimum Delivery 3cy)	<b>\$40.00/cu yd</b> \$4.00/5 gal. \$20.00/30 gal.
<b>Red Cedar Bark Mulch</b> (dyed red/orange chips) (Minimum Delivery 2.7cy)	<b>\$45.00/cu yd.</b> \$4.50/5 gal. \$22.50/30 gal.

### Landscape Stone (1 yd covers approx. 100 ft<sup>2</sup> @ 3" deep)

<b>Crusher Dust</b> (limestone) (Delivery minimum 3cy)	\$40.00/cu yd. \$4.00/5-gal. \$20.00/30-gal.
<b>Crushed Stone (3/4")</b> (limestone w/ dust) (Delivery min 3.4cy)	\$35.00/cu yd. \$3.50/5-gal. \$20.00/30-gal.
<b>Crushed Clear Stone (3/4", no dust limestone)</b> (Delivery min 3cy)	\$40.00/cu yd \$4.00/5-gal. \$20.00/30-gal.
<b>Crushed Field Stone (1 1/2")</b> (Delivery min 1.2cy)	\$135.00/cu yd. \$13.50/5-gal. \$62.50/30-gal.
<b>Field Stone/Boulders</b> (1 ton = 30 face ft.) (Delivery min 0.88 cy)	\$135.00/cu yd. \$100.00/ton
	Cobble Stone \$1.50 Med -\$4.50 per 6-12" size Large-\$25.00 ea. 12"-24" size \$0.80 per pound ea. Over 2'
<b>Gold Granite (3/4" crushed)</b>	<b>\$60.00/cu. yd.</b>

(Delivery min 2 cy)	\$6.00/5 gal. \$30.00/30 gal.
<b>Marathon Blue Stone</b> (Delivery min 0.9 cy)	<b>\$130.00/cu. yd.</b> \$13.00/5 gal. \$50.00/30 gal
<b>Midnight Stone (2" black)</b> (Delivery min 0.8 cy)	<b>\$150.00/cu. yd.</b> \$15 per 5 gal. \$75.00/30 gal.
<b>Mississippi River Stone (¾" or 1½")</b> (Delivery min 1.6 cy)	<b>\$75.00/cu yd.</b> \$7.50/5 gal. \$37.50/30 gal.
<b>Pea Gravel (1/4 - 3/8")</b> (Delivery min 2.2 cy)	<b>\$55.00/cu. yd.</b> \$5.50/5 gal. \$27.50/30 gal. \$67.50/30 gal.
<b>Red Granite (Crushed 3/4" , Screened 3/4" , or screened)</b> (Delivery min 1.2 cy)	<b>\$150.00/cu. yd. 2"</b> \$15.00/5 gal. \$55.00/30 gal.
<b>River Rock (1.5" multicolored)</b> (Delivery min 1.6 cy)	<b>\$75.00/cu yd</b> \$7.50/5 gal. \$37.50/30 gal.
<b>Washed Stone</b> (Delivery min 2.2 cy)	<b>\$55.00/cu. yd.</b> \$22.50/30 gal. \$4.50/5 gal.
<b>De Pere Limestone (400 lbs. delivery min) 20# per square foot</b>	<b>30¢ per pound</b>

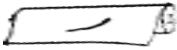
### SOILS AND COMPOST

<b>Compost</b> (leaves & branch trimmings) (Delivery min 4cy)	<b>\$30.00/cu. yd.</b>
<b>Garden Mix</b> (Delivery min 2.4cy) 40% Sandy Loam Soil, 30% Peat Soil, 10% Leaf Compost, 10% Sphagnum Peat Moss. 10% Horse Manure	<b>\$50.00/cu. yd.</b> \$22.50/30 gal. \$5.00/5 gal.
<b>Horse Manure (composted)</b> (Delivery min 4cy)	<b>\$30.00/cu. yd.</b> \$15.00/30 gal. \$3.00/5 gal.
<b>Straw Bale</b> (covers 500 sq feet)	<b>\$12.00/bale</b>
<b>Sand</b> (Delivery min 3.4cy)	<b>\$35.00/yd.</b> \$3.50/5 gal. \$17.50/30 gal.
Topsoil Pulverized (Delivery min 4cy)	<b>\$30.00/cu yd</b> \$15.00/30 gal. \$3.00/5 gal.

## Lawn Grass (1#=200sf, 50#=10,000sf)

Heritage Lawn Seed (best lawn, full sun)	\$300.00 per 50# bag \$8.00 per pound
Willems Special Lawns Seed (good lawn, light shade/full sun)	\$250.00 per 50# bag \$7.00 per pound
Shady Place Seed (full shade, sparse lawn until 3rd year)	\$300.00 per 50# bag \$8.00 per pound
Sod (roll = 5'x2' = 10 sq ft)	\$6.00/roll
Delivery Charge (no minimum)	\$100.00
Rye Grass Seed	\$150.00 per 50# bag \$4.00 per pound

### Matting & Edging

WeedEnder Landscape Fabric (6' wide)	20¢ per sq ft (cut to length)
Full Roll (6'x300')(1800 sf) 	\$225.00
Aluminum Edging, Black Anodized 16' Strip (5 stakes included)	\$112.00
Aluminum Edging, Mill Finish 16' Strip (5 stakes included)	\$96.00
Dimex Edge Pro Vinyl Lawn Edging (incl. 4 stakes & 1 connector)	\$30.00/20' strip
Extra Packs (4 stakes + 1 connector)	\$6.00 ea.
Edging Connectors	\$1.00 ea.
Edging Stakes	\$1.00 ea.
Edging 90° Connector	\$3.00 ea.
Straw Bale (each bale covers 500 sq ft)	\$12.00 each
Staples (staggered, every 3' of netting)	\$0.20 each \$75.00/box of 1000
Bamboo Tree Stake 8'	\$3.00 each
Straw Matting (100sq yd, 112.5' x 8') (60 staples recommended per roll-not included)	\$100.00 per roll

### FERTILIZERS AND AMENDMENTS

Lawn Fertilizer 10-10-10	\$35.00/50# bag (covers 4k sf)
Nutri-Pak Fertilizer Packets	\$0.50 per packet (½ oz.) \$2.00 per packet (2 oz.)

## Evergreens

### Arborvitae Globes

Globe (Woodward)	15-18"	\$45.00
	18-24"	\$55.00
	3-4'	\$65.00
Dwarf Globe (Midget)	15-18"	\$45.00
	18-24"	\$55.00
Hetz Midget (Dwarf Globe)	12-15"	\$40.00
	15-18"	\$55.00
	18-24"	\$65.00

### Arborvitae (Upright)

American Dark Green	4-5'	\$150.00
	5-6'	\$175.00
Emerald Green	4-5'	\$140.00
	5-6'	\$150.00
	6-7'	\$175.00
Dwarf Holmstrup (Pyramidal)	3'-4'	\$125.00
Pyramidal	4'-5'	\$140.00
	5'-6'	\$150.00
Techny	4-5'	\$150.00
	5-6'	\$175.00

### Juniper (Spreading)

Andorra	15-18"	\$45.00
	18-24"	\$50.00
Bar Harbor	15-18"	\$45.00
	18-24"	\$50.00
Blue Chip	15-18"	\$40.00
	18-24"	\$45.00
Blue Rug	15-18"	\$45.00
Blue Sargent		\$45.00
Blue Star		\$45.00
Calgary Carpet	18-24"	\$50.00
Gold Tip	15-18"	\$45.00
	18-24"	\$50.00
Grey Owl	18-24"	\$50.00
Hughes	18-24"	\$50.00
Kallay Compact	15-18"	\$40.00
	18-24"	\$45.00
Old Gold		\$45.00
Sargent Green	15-18"	\$45.00
	18-24"	\$50.00
Sea Green	15-18"	\$45.00
	18-24"	\$50.00

<b>Juniper (Upright)</b>		
Moonglow	4-5'	\$250.00
	5-6'	\$300.00
Taylor	4-5'	\$175.00
Spartan	5-6'	\$250.00
Star Power	7'	\$350.00

<b>Pine (Spreading)</b>		
Mugho	15-18" (3 gal.)	\$50.00
	18-24"	\$55.00

<b>Pine (Upright)</b>		
White	5-6' (B&B)	\$350.00
	6-7' (B&B)	\$500.00

<b>Spruce (spreading)</b>		
Bird Nest	15-18"	\$50.00
Globe (Globosa) Blue	15-18"	\$125.00
	18-24"	\$55.00

<b>Spruce (upright)</b>		
Black Hills	3-4'	\$125 .00
	5-6' (B&B)	\$350.00
	7-8' (B&B)	\$500.00
Colorado Blue or Green	5-6' (B&B)	\$350.00
Cupressina Columnar Spruce		\$350.00
Dwarf Alberta		\$125.00

<b>Topiary Aborvitae</b>		
Emerald Green Spiral	4-5'	\$200.00
Emerald Green Tiered	4-5'	\$200.00

<b>Topiary Spruce</b>		
Globe Blue Spruce (On Std) 24-30"		\$190.00
Dwarf Alberta Spiral #7		\$200.00

<b>Topiary Juniper</b>		
Blue Star (on std)		\$175.00

<b>Yew (Spreading)</b>		
Everlow		\$80.00
Japanese Spreading	15-18"	\$55.00
(Tauton or Densiform)		\$65.00

## BROADLEAF EVERGREENS

<b>Boxwood</b>		
Green Gem		\$55.00
Green Mountain		\$75.00
Green Velvet	15-18"	\$55.00
	18-24"	\$65.00
Cone		\$175.00
On Standard		\$150.00
Spiral		\$175.00

**Euonymus (Wintercreeper)**

Coloratus	3 gal.	\$35.00
Emerald and Gold	3 gal.	\$35.00
Emerald Gaiety	1 gal.	\$35.00
Gold Splash (PW)	1 gal	\$35.00
Purple Wintercreeper	#1	\$35.00
White Album	1 gal.	\$35.00

**Inkberry (ilex)**

Shamrock	15-18"	\$55.00
----------	--------	---------

**Rhododendron**

Nova Zembla		\$75.00
Olga Mezitt Rhododendron		\$75.00
PJM	B&B 24-30"	\$75.00
Roseum Elegans	B&B 24-30"	\$100.00

**Yucca**

Adam's Needle	2 gal.	\$40.00
Golden Sword	2 gal.	\$55.00

**Shrubs and Grafted Treeforms**

**Almond, Flowering** (pink flowers in spring) 2-3' \$45.00

**Barberry**

Admiration (red/yellow/green)	15-18"	\$45.00
Concorde (purple/red)	15-18"	\$50.00
Crimson Pygmy	15-18"	\$45.00
Helmond Pillar (red leaf)		\$45.00
Royal Burgundy Carousel		\$45.00
Sunsation Gold Pygmy	15-18"	\$45.00

**Buckthorn**

Fineline		\$55.00
----------	--	---------

**Burning Bush** (sun or shade)

Dwarf		\$45.00
Standard	3-4'	\$50.00

**Chokeberry**

Autumn Magic	24-30"	\$45.00
Glossy Black	2-3'	\$40.00
	3-4'	\$45.00
	36"	\$55.00

**Low Scape Mound****Cherry, Fuji Little Twist**

\$40.00

**Coralberry**

Candy (pink)	15-18"	\$40.00
Red	15-18"	\$40.00

**White Hedge**

36" \$55.00

**Cotoneaster**

Apiculata	15-18"	\$40.00
	18-24"	\$45.00

Peking	2-3'	\$40.00
	3-4'	\$45.00
<b>Currant</b>		
Alpine	15-18"	\$35.00
	18-24"	\$40.00
Greenmound	18-24"	\$45.00
<b>Daphne</b>		
Carol Mackie (Burkwood)	18-24"	\$75.00
<b>Dogwood</b>		
Arctic Fire		\$45.00
Bailey's Red Twig	2-3'	\$40.00
	3-4'	\$45.00
Cardinal	3-4'	\$45.00
Insanti (dwarf)	2-3'	\$45.00
Ivory Halo (dwarf)	15-18"	\$40.00
	18-24"	\$45.00
Kelsey	18"	\$40.00
Variegated (Red Twig)	2-3'	\$45.00
Yellow Twig	2-3'	\$50.00
	3-4'	\$50.00
<b>Elder (sambucus)</b>		
Black Lace	15-18"	\$40.00
<b>Forsythia</b>		
Broxenis Dwarf	15-18"	\$40.00
Gold Coast		\$45.00
Meadowlark	3-4'	\$40.00
Northern Gold		\$45.00
Showoff	3-4'	\$40.00
Spring Fling		\$40.00
Sunrise		\$40.00
<b>Hazelnut</b>		
American	2-3'	\$50.00
<b>Honeysuckle</b>		
Dwarf Bush	18-24"	\$40.00
Clavey's Dwarf	2-3'	\$40.00
Cool Splash (variegated)	2-3'	\$40.00
Thunderbolt Box	15-18"	\$40.00
Kodiac Red Bush		\$40.00
<b>Hydrangea</b>		
Annabelle	15-24"	\$45.00
Berry White		\$50.00
Bobo		\$45.00
Endless Summer Original		\$50.00
Bloomstruck		\$50.00
Blushing Bride		\$50.00
Summer Crush		\$50.00
Twist N Shout		\$50.00
Flowerful		\$50.00

Fire & Ice	\$45.00
Firelight	\$45.00
Incrediball (PW) large, white	\$50.00
Cherry Explosion	\$50.00
Invincibelle Wee White	\$50.00
Limelight	\$45.00
Little Lime (PW)	\$45.00
Little Quickfire white/red	\$45.00
Nantucket Blue	\$50.00
Pan Tardiva white	\$45.00
Pee Gee white	\$45.00
Pink Diamond pink	\$45.00
Pinky Winky pink & white	\$45.00
Polar Ball white	\$45.00
Puffer Fish small white	\$50.00
Quickfire red 3 gal	\$45.00
Strawberry Sundae	\$50.00
Summer Crush red	\$55.00
Tickled Pink pink & white 3 gal	\$45.00
Wee Bit Giddy 3 gal.	\$50.00
Wee Bit Giddy 3 gal.	\$50.00
Vanilla Strawberry Pink & white	\$45.00

#### Lilac (syringa) Flower Color

Beauty of Moscow dbl. white	\$45.00
Bloomerange (bush) purple	\$55.00
Treeform	\$150.00
Bloomerange Dark purple	\$55.00
Treeformrm	\$150.00
Charles Jolly red	\$45.00
Common Purple purple	\$45.00
Common White white	\$45.00
Dwarf Korean purple 18-24"	\$45.00
24-30"	\$50.00
Minuet purple	\$45.00
Miss Kim Dwarf lavender 18-24"	\$45.00
24-30"	\$50.00
Sensation prpl/wht edge	\$45.00
Tinkerbell pink (dwarf) 3-4'	\$50.00
Virtual Violet	\$50.00

#### Magnolia

Ann (Purple/red) 2-3'	\$75.00
Jane Magnolia (treeform) #10	\$200.00
Merrill (White) 2-3'	\$75.00
Spring White Magnolia	\$75.00
Royal Star (White) 2-3'	\$75.00

#### Mockorange

Golden Dwarf	\$40.00
Buckley's Quill	\$40.00

**Ninebark**

Amber Jubilee	2-3'	\$45.00
Centerglow	2-3'	\$45.00
Diablo (red leaf)	2-3'	\$45.00
Little Devil (dwf red leaf)		\$40.00
Summer Wine (red leaf)	2-3'	\$45.00
Summer Wine Black	2-3'	\$45.00

**Potentilla**

Abbotswood White		\$45.00
Gold Drop		\$45.00
Gold Finger		\$45.00
Mc Kay's White		\$45.00
Pink Beauty		\$45.00

**Privet**

Cheyenne	3-4'	\$45.00
----------	------	---------

**Rose Tree of China**

Shrubform (double pink spring blossoms)		\$45.00
---	--	---------

**Sandcherry**

Purple Leaf	2-3'	\$45.00
-------------	------	---------

**Serviceberry**

Regent Saskatoon Serviceberry		\$45.00
Regent		\$45.00

**Smoke Bush**

Royal Purple	5 gal.	\$60.00
--------------	--------	---------

**Spirea**

Alba Flora		\$45.00
Anthony Waterer		\$45.00
Birchleaf (Tor)		\$45.00
Crimson Glory		\$45.00
Crispa		\$45.00
Dakota Gold Charm		\$45.00
Double Play Doozie		\$50.00
Fritschiana		\$45.00
Frobelli		\$45.00
Goldflame	15-18"	\$45.00
	18-24"	\$45.00
Golden Elf		\$45.00
Goldmound		\$45.00
Grefsheim		\$45.00
Gumball		\$45.00
Little Princess	15-18"	\$45.00
	18-24"	\$45.00
Magic Carpet	15-18"	\$45.00
	18-24"	\$45.00
Neon Flash		\$45.00
Peppermint Stick (Shirobana)		\$45.00
Petite Poprocks		\$45.00
Pineapple Poprocks		\$45.00
Renaissance		\$45.00

Sem Ashleaf	2-3'	\$45.00
Snowmound		\$45.00
Sundrop		\$45.00
Van Houtte (Bridalwreath)		\$45.00
<b>Viburnum</b>		
American Compact		\$45.00
American Highbush		\$45.00
Autumn Jazz		\$45.00
Arrowwood		\$45.00
Baby Spice		\$45.00
Blue Muffin		\$45.00
Hahs (American)		\$45.00
Korean Spice		\$45.00
Mohican		\$45.00
Raspberry Tart	24-30"	\$45.00
Sargent	18-24"	\$45.00
Snowball	2-3'	\$45.00
<b>Weigela</b>		
Carnival (pink & white flwr)		\$45.00
Dark Horse (purple leaf, pink flwr)		\$45.00
Fine Wine (PW) (ppl leaf, pink flwr)	2 gal.	\$45.00
French Lace (pink flwr, variegated Leaves)		\$45.00
Java Red		\$45.00
Minuet		\$45.00
My Monet (PW)	2 gal.	\$45.00
Peach Kisses Weigela		\$45.00
Rainbow Sensation		\$45.00
Red Prince		\$45.00
Sonic Bloom Pink		\$45.00
Sonic Bloom Red		\$45.00
Shining Sensation		\$45.00
Spilled Wine	2 gal.	\$45.00
Tango		\$45.00
Variegated		\$40.00
Wine & Roses	3 gal	\$45.00
<b>Willow</b>		
Blue Arctic Dwarf (shrub)		\$45.00
Dappled (Hakuro Nishiki) (shrub)		\$45.00
Dappled (on std)		\$250.00
Pussy (shrub)		\$45.00
<b>Winterberry</b>		
Jim Dandy (Male)	2'	\$45.00
Red Sprite (Female)	2'	\$45.00
<b>Witch Hazel</b>		
Common	2-3'	\$50.00
<b>Woadwaxen</b>		
Royal Gold	15-18"	\$35.00

## Vines

### Bittersweet, American

Autumn Revolution \$35.00

### Clematis

Jackman (navy blue) 2 gal. \$45.00

Various other colors 2 gal. \$45.00

### Honeysuckle

Dropmore Scarlet (vine) #1 pot \$45.00

Goldflame (vine) #1 pot \$45.00

Mandarin #3 pot \$45.00

### Hydrangea

Climbing 2 gal. \$45.00

### Ivy

Boston 2 gal. \$35.00

Engleman 2 gal. \$35.00

### Sumac

Gro Low 15-18" \$45.00

Staghorn (treeform) 4-5' \$60.00

Tiger Eyes Cutleaf Staghorn \$45.00

### Summersweet

Hummingbird \$40.00

Ruby Spice \$55.00

## ROSES (shrubs and climbing)

Carefree Sunshine (Yellow) \$40.00

Carefree Wonder (DoublePink) \$40.00

Champlain (Pink) \$40.00

Chuckles (Deep Pink) \$40.00

Coral Drift \$40.00

David Thomson (Pink) \$40.00

Drift Pink \$40.00

Drift Red #3 \$40.00

Easy Elegance Music Box (yellow, pink edge) \$40.00

Foxi Pavement (Deep Pink) \$40.00

John Cabot (Climber) (Red) \$40.00

Knockout (Cherry Red) #3 pot \$40.00

Knockout, Double Pink (no scent) #3 pot \$40.00

Knockout, Sunny (Yellow) #3 pot \$40.00

Morden Centennial (med pink) \$40.00

Music Box (yellow, pink edges) \$40.00

Nearly Wild (Single Pink) \$40.00

Oso Easy Paparika (Peach/orange) \$40.00

Oso Easy Fragrant Pink (Pink) \$40.00

Purple Pavement (Mauve) \$40.00

Snowwhite Pavement \$40.00

Sunrise Easy Elegance Rose \$40.00

The Fairy (Mini Lt Pink) \$40.00

Theresa Bugnet (Pink) \$40.00

William Baffin (Climber) (Drk Pink) \$40.00

## Perennials & Groundcovers

<b>Achillia</b> (Yarrow)		
Golden	1 gal.	\$15.00
Strawberry Seduction	1 gal.	\$15.00
Yellow	1 gal.	\$15.00
<b>Alcea</b> (Hollyhock)		\$15.00
<b>Alchemilla</b> (Ladysmantle)		\$15.00
<b>Allium</b> (Ornamental Onion) Millennium		\$15.00
<b>Ajuga</b> (Bugleweed)		
Bronze	1 gal.	\$15.00
Metallica Crispa	1 gal.	\$15.00
<b>Anemone</b> (Japanese Anemone)	1 gal.	\$15.00
<b>Artemisia</b> (wormwood)		
Silvermound	1 gal.	\$15.00
<b>Aster</b>		
New England	1 gal.	\$15.00
Purple Dome	1 gal.	\$15.00
Woods Pink or Purple	1 gal.	\$15.00
<b>Astilbe</b>		
Bridal Veil (white)	1 gal.	\$15.00
Ostrich Plume (cream)	1 gal.	\$15.00
Rhineland (pink)	1 gal.	\$15.00
Fannel Red (deep red)	1 gal.	\$15.00
Coral (pink/orange)	1 gal.	\$15.00
Pumila (rosy purple)	1 gal.	\$15.00
<b>Bachelors Button</b> (Centaurea) (blue, red)	1 gal.	\$15.00
<b>Baptisa Lemon Merangere</b>	1 gal.	\$15.00
<b>Bee Balm</b> (Monarda)		
Grand Parade	1 gal.	\$15.00
Marshal Delight	1 gal.	\$15.00
Petite Delight	1 gal.	\$15.00
<b>Bellflower</b> (Campanula)		
Blue or White Clips	1 gal.	\$15.00
Blue or White Clips	1 gal.	\$15.00
<b>Black-Eyed Susan</b> (Rudbekia)		
Becky Mix	1 gal.	\$15.00
Goldstrom	1 gal.	\$15.00
<b>Bleeding Heart</b> (pink or white varieties)	1 gal.	\$15.00
<b>Brunnera, Jack Frost</b>	1 gal.	\$20.00
<b>Butterfly Weed</b>	1 gal.	\$15.00
<b>Cardinal Flower</b> (Lobelia)	1 gal.	\$15.00
<b>Catmint</b>		
Walkers Low	1 gal.	\$15.00
<b>Chrysanthemum</b> Leu Canthemum	1 gal.	\$15.00
<b>Coneflower (Echinacea)</b> (EK-an-A-sha)		
Limelight, Big Sky, Magnus,	1 gal.	\$15.00
Kim's Kneehigh (purple or red)	1 gal.	\$15.00
Pow-wow Wildberry	1 gal.	\$15.00
Purple Coneflower	1 gal.	\$15.00

White Swan	1 gal.	\$15.00
<b>Coralbell</b> (heuchera)		
Bressingham, Caramel, Citronelle, Georgia Peach, Plum Pudding, Palace Purple	1 gal	\$15.00
<b>Coreopsis</b>		
Moonbeam	1 gal	\$15.00
Zagreb	1 gal	\$15.00
<b>Daylily</b>		
Going Bananas (yellow)	1 gal.	\$15.00
Happy Returns (yellow)	1 gal.	\$15.00
Hall's Pink (lt. Pink)	1 gal.	\$15.00
Ice Carnival (white)	1 gal.	\$15.00
June Bug (gold/maroon eye)	1 gal.	\$15.00
Lemon Lollipop	1 gal.	\$15.00
Little Grapette (purple/yellow)	1 gal.	\$15.00
Red Volunteer (crimson/yellow throat)	1 gal.	\$15.00
Rocket City (orange)	1 gal.	\$15.00
Rosy Returns	1 gal.	\$15.00
Ruby Spider	1 gal.	\$15.00
Simply Irresistible	1 gal.	\$15.00
Stella D'oro (golden yellow)	1 gal.	\$15.00
Summer Wine (purple/lime green throat)	1 gal.	\$15.00
<b>Delphinium</b>		
Blue Butterfly	1 gal.	\$15.00
Pacific Giant Hybrid	1 gal.	\$15.00
<b>Dianthus</b>		
Baths Pink	1 gal.	\$15.00
Fire Witch	1 gal.	\$15.00
Frosty Fire	1 gal.	\$15.00
Peman Violet	1 gal.	\$15.00
Raspberry Swirl, Zing Rose	1 gal.	\$15.00
<b>Fern</b>		
Japanese Painted	1 gal.	\$15.00
Lady Fern	1 gal.	\$15.00
Ostrich Fern	1 gal.	\$15.00
<b>Foxglove</b>		
Candy Mountain		\$15.00
<b>Galiarda (Blanketflower)</b>		
Goblin, Arizona Red, Super Apricot, etc.	1 gal.	\$15.00
<b>Geranium</b>		
Rozanne	1 gal.	\$15.00
Johnson's Blue	1 gal.	\$15.00
<b>Hens and Chicks</b> (semperivum)		
Red or Bi-color	1 gal.	\$15.00
<b>Hibiscus</b> (late summer 9" blooms)		
Hardy Red, White, Cream, Pink	1 gal.	\$45.00
<b>Hosta</b>		
Albo Marginata	1 gal.	\$15.00
Aureo Marginata	1 gal.	\$15.00

Blue Mammoth		\$15.00
Elegans Blue Giant		\$15.00
Fire and Ice	1 gal.	\$15.00
Fortune	1 gal.	\$15.00
Francee	1 gal.	\$15.00
Ginkgo Graig	1 gal.	\$15.00
Golden Tiera	1 gal.	\$15.00
Gold Standard	1 gal.	\$15.00
Halcyon		
Hedspun Blue	1 gal.	\$15.00
Honeybell		\$15.00
Lancifolia	1 gal.	\$15.00
Medio-Varigated	1 gal.	\$15.00
Patriot	2 gal.	\$15.00
Royal Standard	2 gal.	\$15.00
Sieboldi Elegans (Big Blue)	1 gal.	\$15.00
Wide Brim	1 gal.	\$15.00
<b>Iris, Siberian</b>		
Butter and Sugar (Yellow/White)	1 gal.	\$15.00
Caesar's Brother (Blue/Violet)	1 gal.	\$15.00
<b>Liatris</b>		
Blue	1 gal.	\$15.00
Kobold (purple)		\$15.00
<b>Lily</b>		
Lilly of the Valley	1 gal.	\$15.00
<b>Lily, Oriental</b>		
Stargazer	1 gal.	\$15.00
<b>Lungwort</b>		
Mrs. Moon	1 gal.	\$15.00
Raspberry Splash	1 gal.	\$15.00
<b>Lupine</b>		
Tutti-Fruiti	1 gal.	\$15.00
<b>Oriental Poppy (Papaver)</b>		
Queen Alexander, Price of Orange,	1 gal.	\$15.00
<b>Pachysandra</b>		
Japanese "Green Carpet"	1 gal.	\$15.00
<b>Painted Daisy (Pyrethrum)</b>		
Shasta, etc. White/various colors	1 gal.	\$15.00
<b>Penstemon</b>		
Huskers Red	1 gal.	\$15.00
<b>Peony</b>		
Pink, Red or White	1 gal.	\$45.00
<b>Phlox, Creeping</b>		
Blue, Pink or White	1 gal.	\$15.00
Candy Stripe	1 gal.	\$15.00
<b>Phlox, Garden</b>		
Pink, White, Red	1 gal.	\$15.00
<b>Pincushion (Scabiosa)</b>	1 gal.	\$15.00
<b>Russian Sage (Perovka)</b>		

	Little Spire (dwarf)	1 gal.	\$15.00
	Blue Spire (standard)	1 gal.	\$15.00
<b>Salvia</b>			
	Blue Queen (blue)	1 gal.	\$15.00
	May Knight (purple)	1 gal.	\$15.00
<b>Sedum</b>			
	Autumn Fire	1 gal.	\$15.00
	Autumn Joy	1 gal.	\$15.00
	Brilliant	1 gal.	\$15.00
	Dragon's Blood	1 gal.	\$15.00
	Frosty Morn (Variegated)	1 gal.	\$15.00
	Matrona	1 gal.	\$15.00
	Maestro	1 gal.	\$15.00
	Neon		
	Vera Jameson (purple)	1 gal.	\$15.00
<b>Snow on the Mountain</b>		1 gal.	\$15.00
<b>Solidago</b>			
	Fireworks	1 gal.	\$15.00
<b>Spotted Nettle (Lamium)</b>			
	Beacon Silver (Pink)	1 gal.	\$15.00
<b>Veronica (Speedwell)</b>			
	Sunnyborder Blue	1 gal.	\$15.00
<b>Vinca Minor</b> (creeping blue or white flower)	1 gal.		\$15.00

### **Ornamental Grasses**

	Blue Fescue	1 gal.	\$20.00
	Blue Oat	1 gal.	\$20.00
	Elija Blue	1 gal.	\$20.00
	Feather Reed		
	Avalanche (variegated)	1 gal.	\$20.00
	Karl Foerester	1 gal.	\$20.00
	Fountain Dwarf	1 gal.	\$20.00
	Little Bluestem	1 gal.	\$20.00
	Maiden Grass	1 gal.	\$20.00
	Miscanthis (Flame Grass 3-4')	1 gal.	\$20.00
	Oehme Palm Sedge	1 gal.	\$20.00
	Overdam Reed Grass (variegated) (4-6' mature)	1 gal.	\$20.00
	Prairie Dropseed	1 gal.	\$20.00
	Shenandoah (Blue) (3-5' mature)	1 gal.	\$20.00
	Switch Grass, Northwinds	1 gal.	\$20.00

## FRUIT TREES

*(see pages 31-32 for pollinating information)*

### Apple (all semi-dwarf)

Connell Red	6-8'	\$85.00
Cortland,Dwarf	5-6'	\$85.00
Delicious Red, Dwarf	5-6'	\$85.00
Delicious Yellow,	6-8'	\$85.00
Frostbite		\$85.00
Golden Delicious	6-8'	\$85.00
Granny Smith		\$85.00
Honeycrisp	7-8'	\$85.00
Honeygold	7'	\$85.00
Jonathan	7-8'	\$85.00
KinderKrisp	5-6'	\$85.00
McIntosh	5-6'	\$85.00
Northwest Greening	6-8'	\$85.00
Pink Lady	4-5'	\$85.00
Red Duchess	5-6'	\$85.00
Sweet Sixteen	5-6'	\$85.00
Wealthy	5-6'	\$85.00
Wolf River (Standard)	6-7'	\$85.00

### Cherry

Bing		\$85.00
Black Tartarian (Standard)	5-6'	\$85.00
Montmorency	5-6'	\$85.00
Mesabi Sweet	5-6'	\$85.00
Meteor	\$85.00	
Northstar (Standard)	4-5'	\$85.00
Rainier	5-6'	\$85.00
Sweet Cherry Pie	5-6'	\$85.00

### Peach (no warranty)

Alberta		\$85.00
Contender		\$85.00

### Pear

Bartlett, Semi-Dwarf	4-5'	\$85.00
Early Gold	7-8'	\$85.00
Lucious		\$85.00
Summer Crisp (semi-dwarf)	5-6'	\$85.00

### Plum

Mount Royal (dwarf)	5-6'	\$85.00
Pembina	6-7'	\$85.00
Superior (dwarf)	6-8'	\$85.00
Toka	5-6'	\$85.00

## Ornamental Trees

<b>Cherry, Weeping Higan</b>	Potted	\$150.00
<b>Crabapple (Flowering Crab)</b>		
Brandy Wine (Red)	B&B 2"=\$250 2½"=\$312.50 3"=\$375	
Cardinal (Red)	Potted	\$150.00
Cinderella (White)	B&B 2"=\$250 2½"=\$312.50 3"=\$375	
Coralburst (Pink)	Potted	\$150.00
Firebird (Red)	B&B 2"=\$250 2½"=\$312.50 3"=\$375	
Golden Raindrops (white)	Potted	\$150.00
Lollipop (White)	B&B 2"=\$250	
Pink Spire (Pink)	Potted	\$150.00
	B&B 2"=\$250 2½"=\$312.50 3"=\$375	
Prairie Fire Dk (Pink)	Potted	\$150.00
Prairie Fire (Clump form)(Red)	Potted	\$150.00
Profusion (Red/Purple)	Potted	\$150.00
Profusion (Clump form)	B&B 2"=\$250 2½"=\$312.50 3"=\$375	
Purple Prince (Purple)	Potted	\$150.00
	B&B 2"=\$250 2½"=\$312.50 3"=\$375	
Red Jewel (White)	Potted	\$150.00
	B&B 2"=\$250 2½"=\$312.50 3"=\$375	
Red Jewel (clump form) (White)	B&B	\$250.00
Red Splendor (Pink)	Potted	\$150.00
	B&B 2"=\$250 2½"=\$312.50 3"=\$375	
Royalty (Purple)	Potted	\$150.00
Royal Raindrops (purple)	Potted	\$150.00
Ruby Tears (weeping) (Dark Pink)	Potted	\$150.00
Sargent, (Dwarf White)	Potted	\$150.00
Showtime (deep pink)	Potted #7	\$150.00
Snowdrift (White)	Potted	\$150.00
	B&B 2"=\$250 2½"=\$312.50 3"=\$375	
Spring Snow (White)	Potted	\$150.00
	B&B 2"=\$250 2½"=\$312.50 3"=\$375	
Sugartyme (White)	Potted	\$150.00
	B&B 2"=\$250 2½"=\$312.50 3"=\$375	
Tina (White)	Potted	\$150.00
	B&B 2"=\$250 2½"=\$312.50 3"=\$375	
<b>Hawthorn</b>		
Thornless Cockspur	Potted	\$150.00
	B&B 2"=\$250 2½"=\$312.50 3"=\$375	
Washington	B&B 2"=\$250 2½"=\$312.50 3"=\$375	
<b>Hydrangea (treeform)</b>	Blossom Color	
Little Quickfire	Potted	\$150.00
Pink Diamond	Pink 6-8' Potted	\$150.00
Quickfire	white/pink ball	Potted \$150.00
Tardiva	White cone	Potted \$150.00
Vanilla Strawberry	white/pink	Potted \$150.00
<b>Lilac (treeform)</b>		
Dwarf Korean (on std.) (Lavender)	Potted	\$150.00

	B&B 2"=\$250 2½"=\$312.50	
Ivory Silk (Japanese)	(White) Potted	\$150.00
	B&B 2"=\$250 2½"=\$312.50 3"=\$375	
Japanese (Tree & Clumpform)	(White) Potted	\$150.00
	B&B 2"=\$250 2½"=\$312.50 3"=\$375	
Miss Kim (on std.) (Purple)	potted	\$150.00
	B&B 2"=\$250 2½"=\$312.50	
Tinkerbell (on std)	potted	\$150.00
<b>Magnolia</b>		
Ann (faded fucia out, white in)		\$150.00
Butterfly (yellow)		\$150.00
Jane (fucia out, white in)		\$150.00
Merrill (white)		\$150.00
Royal Star (white)		\$150.00
<b>Maple</b>		
Amur Flame (dwarf) 3-4'		\$150.00
<b>Ninebark</b>		
Summer Wine 5-6'		\$150.00
<b>Pear</b> (ornamental)		
Autumn Blaze	Potted	\$150.00
	B&B 2"=\$250 2½"=\$312.50 3"=\$375	
Cleveland Select White	Potted	\$150.00
<b>Plum</b> (ornamental)		
Double Flowering Pink	Potted	\$150.00
Newport (Red Leaf) Pink	Potted	\$150.00
Princess Kay Pink	Potted	\$150.00
<b>Purpleleaf Sandcherry</b> (treeform)	Potted	\$150.00
<b>Redbud</b> (treeform)		
Cersis	Potted	\$150.00
	B&B 2"	\$250.00
<b>Serviceberry</b> (Tree form/Shrub form)		
Autumn Brilliance	Potted	\$150.00

### SHADE TREES

<b>Aspen</b>		
Quaking	Potted	\$150.00
<b>Birch</b>		
Heritage River (clump)	Potted	\$150.00
	B&B 2"=\$250 B&B 2½"=\$312.50 3"=\$375	
White Satin	Potted	\$150.00
	B&B 2"=\$250 B&B 2½"=\$312.50 3"=\$375	
White Spire (clump)	Potted	\$150.00
	B&B 2"=\$250 B&B 2½"=\$312.50 3"=\$375	
<b>Ginkgo</b>		
Biloba	B&B 2"=\$300 2½"=\$375 3"=\$450 3½"=\$525	
	4"=\$600	
Princeton Sentry	B&B 2"=\$300 2½"=\$375 3"=\$450 3½"=\$525	
	4"=\$600	
<b>Hackberry</b>		

	Celtis	B&B 2"=\$250 2½"=\$312.50 3"=\$375
<b>Honeylocust</b>	Imperial	B&B 2"=\$250 2½"=\$312.50 3"=\$375
	Skyline	Potted \$150.00
		B&B 2"=\$250 2½"=\$312.50 3"=\$375
	Shademaster	B&B 2"=\$250 2½"=\$312.50 3"=\$375
	Hornbeam	B&B 2"=\$250 2½"=\$312.50 3"=\$375
	Kentucky Coffee Tree	B&B 2"=\$250 2½"=\$312.50 3"=\$375
<b>Linden</b>	American Sentry	B&B 2"=\$250 2½"=\$312.50 3"=\$375
	Glenleven	B&B 2"=\$250 2½"=\$312.50 3"=\$375
	Greenspire	Potted \$150.00
		B&B 2"=\$250 2½"=\$312.50 3"=\$375
	Redmond	B&B 2"=\$250 2½"=\$312.50 3"=\$375
<b>Maple</b>	Armstrong	B&B 2"=\$250 2½"=\$312.50 3"=\$375
	Autumn Blaze	Potted \$150.00
		B&B 2"=\$250 2½"=\$312.50 3"=\$375
		B&B 3½"=\$437.50 4"=\$500
	Autumn Fantasy	B&B 2"=\$250 2½"=\$312.50 3"=\$375
		B&B 3½"=\$437.50 4"=\$500
	Brandy Wine	B&B 2"=\$250 2½"=\$312.50 3"=\$375
	Crimson King	B&B 2"=\$250 2½"=\$312.50 3"=\$375
	Emerald Lustre	Potted \$150.00
		B&B 2"=\$250 2½"=\$312.50 3"=\$375
	Emerald Queen	Potted \$150.00
		B&B 2"=\$250 2½"=\$312.50 3"=\$375
	Fall Fiesta	Potted \$150.00
		B&B 2"=\$250 2½"=\$312.50 3"=\$375
	Marmo	Potted \$150.00
		B&B 2"=\$250 2½"=\$312.50 3"=\$375
		3½"=\$437.50 4"=\$500
	Matador	Potted \$150.00
		B&B 2"=\$250 2½"=\$312.50 3"=\$375
	Red Sunset	Potted \$150.00
	B&B 2"=\$250 2½"=\$312.50 3"=\$375	
Royal Red	Potted \$150.00	
	B&B 2"=\$250 2½"=\$312.50 3"=\$375	
Sienna Glen	B&B 2"=\$250 2½"=\$312.50 3"=\$375	
State Street Maple	B&B 2"=\$250 2½"=\$312.50 3"=\$375	
Sugar, Green Mountain	Potted \$150.00	
	B&B 2"=\$250 2½"=\$312.50 3"=\$375	
<b>Oak</b>	Bur	B&B 2"=\$250 2½"=\$312.50 3"=\$375
	Red	Potted \$150.00
		B&B 2"=\$250 2½"=\$312.50 3"=\$375
	Swamp White	Potted \$150.00
		B&B 2"=\$250 2½"=\$312.50 3"=\$375

**Willow**

Niobe Weeping

Potted

\$150.00

Review us on Google!

☆☆☆☆☆



**Seasonal Annuals**

Spring/Summer/Autumn

**Ultimate Potting Soil** (1 cubic foot) \$25 per bag

**Ways to Save at Willems!**

Join our rewards program, and for every \$200 you spend, get \$10.00 off your next purchase. Download the Clover App and sign up. Enter the phrase on the bottom of your receipt. When you are ready to claim your reward, open the app when you are ready to check



GBBG members get a 15% discount on picked-up plant material. Must show membership card at time of purchase.

## **Before You Visit Us:**

*Some tips for your comfort and safety*

### **Retail Shop/Office Hours of Operation Throughout Year Hours subject to change due to weather or other unforeseen circumstances.**

Please call or check Google for current hours of operation.

#### **Early-to-Mid Summer**

**(May 1st to July 4th)**

**M-f 8a-6p, Sa 8a-4p, Su 8a-2p**

#### **Mid-to-Late Summer**

**(July 4th to End of Daylight Savings Time)**

**M-F 8a-6p, Sa 8a-4p, Su Closed**

#### **Fall Hours:**

**(End of DST to Thanksgiving)**

**M-F 8a-5p, Sa 8a-2p, Sun Closed**

#### **Winter to Spring Hours**

**(Thanksgiving to May 1st)**

**M-F 8a-5p, Sa & Su Closed**

**8am– 12pm Memorial Day, 4th of July, Christmas Eve, NYE**

*Closed Thanksgiving Day,*

*Christmas Day, New Years Day, & Labor Day*

Wear comfortable, off-road type sports or hiking shoes or boots for gravel and mulch (flip-flops, high-heeled shoes, open-toed shoes, or dress shoes are not recommended).

Strollers are fine if they have larger wheels, as skinny wheels have trouble pushing through the gravel or mulch parts of the yard.

We occasionally apply herbicides and pesticides to our plants, so be aware of sensitivities to these (we are required by law to apply control measures for weeds and pests).

Dress for the weather-Spring can be especially unpredictable-dress in layers and prepare for rainy weather.

You are welcome to drive through our sales yard, but please be aware of hazards & pedestrians. Please park your vehicle out of the way of traffic. Items can be loaded into your vehicle and brought to a check-out area such as our sales office or seasonal greenhouse.

Ask for help before loading items that may be too heavy for one person to lift.

Do not take plants tagged "sold" for other customers or projects.

If you need help, and do not see a sales person, call or come to the of-ice, and we will be happy to assist you.

Remember that the pots of dirt the plants come in are dirty, and may need

# How and When to Trim Shrubs and Trees

## Maintaining Overall Shape

Prune to maintain overall shape of shrubs at any time of the year. This includes removing any dead or diseased branches or removing branches that extend beyond the desired shape of the plant. Keep in mind that not all shrubs have the same shape, and you should work to maintain the natural shape of the shrub. Weeping shrubs, like forsythia, have a natural arch to their branches and should not be trimmed to form a ball or rounded canopy.

## Spring-Blooming Shrubs and Trees

Trim shrubs like forsythia, lilac and mock orange that bloom in spring or early summer directly after blooming. Spring-blooming shrubs set buds in mid- to late summer for the next year's blooms. Any pruning or trimming done after the first week of July may remove young buds and diminish blooms for the next season.

## Summer- or Fall-Blooming Shrubs and Trees

Prune summer- or fall-blooming shrubs like summersweet in early spring before new growth occurs. Summer-blooming shrubs bloom on new growth. Pruning in early spring promotes new growth and vigorous blooms.

## Procedure

Use clean, sterile clippers when pruning or trimming shrubs. Dip clippers in a solution of one part household bleach to seven parts of water between cuts. Making a clean cut with sterile clippers reduces the risk of introducing disease in open cuts. Trim terminal shoots on a 45-degree angle about 1/4 inch above a bud. Sharp angles take longer to heal and increase the risk of exposure to disease. A 45° angle allows water to run off the cut, and encourages new growth to form from lateral buds 6 to 8 inches below the cut. Control the direction of new growth by selecting a lateral bud facing the direction in which you wish new growth to appear, and cut 1/4 inch above the bud. If two buds are present facing opposite directions, remove the bud that you do not want to grow.

## Severe Pruning

Severely prune overgrown shrubs to rejuvenate and encourage lush new growth. Shear to the ground in early spring, if necessary. Yellow and red twig dogwood benefit from shearing nearly to the ground each year. This encourages new woody growth and creates a compact plant with showy wood.

## Perennials

Cut the died-back plant completely to the ground in the fall. Some people enjoy the look of some perennials, such as ornamental grass in winter, so you may keep these up until spring, before the new growth emerges from the ground.

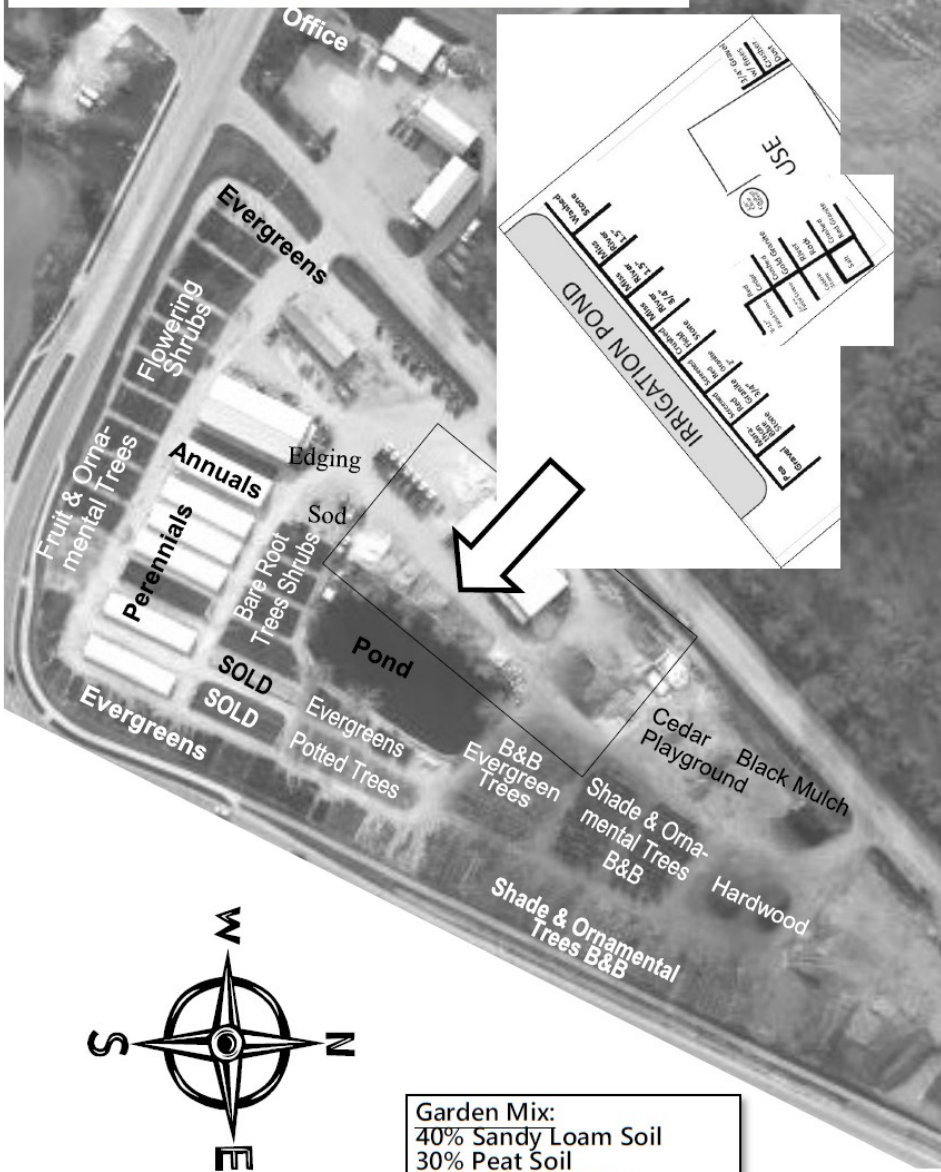
## Evergreens

Evergreens such as boxwood, pine, spruce, cedar (arborvitae & juniper), holly, etc. can be pruned at any time during the growing season. You may want to avoid trimming evergreens during the hottest & driest time of the year (usually late August/early September).





**Map of Sales Yard:** Please use this map to find where to go for certain items. If you need help, please go to the Sales Office, or call us at 920-336-1749.



**Garden Mix:**  
 40% Sandy Loam Soil  
 30% Peat Soil  
 10% Leaf Compost  
 10% Sphagnum Peat Moss  
 10% Aged Horse Manure

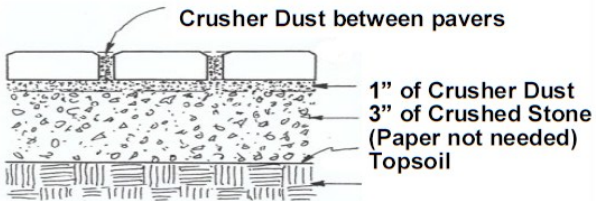


Scan this code to see pictures of our bark mulch and decorative stone!

### Paver Layer Installation

Due to our harsh winters and deep frost, below is how we recommend laying pavers and what materials to use.

Base layers under pavers





# Deer-Resistant Plants

Keep in mind that no plant is guaranteed to be fully resistant to deer. These plants are ones that deer are less likely to take a liking to if new to the area. We recommend a combination of deer repelling techniques, and to change them up for a successful deer-free yard.

## **Evergreens**

Spruce

Boxwood

Juniper

## **Shrubs**

Barberry

Forsythia

Lilac

Ninebark

Sand Cherry

Tall Phlox

## **Perennials**

Allium

Astillbe

Bee Balm

Bleeding Heart

Coneflower

Coreopsis

Nettle

Salvia

Shasta Daisy

## **Grasses**

Blue Fescue

Blue Oat Grass

Fountain Grass

Maiden Grass

Switch Grass



# Plants for Wet Areas

## **Shade Trees**

Black Gum

Red Maple

River Birch

Freeman Maple

Weeping Willow

Ash

## **Perennials**

Beebalm

Daylily

Violet

Rose Mallow

Sweet Woodruff

## **Shrubs**

American Cranberry

Red Twig Dogwood

Summersweet

Buttonbush

## **Grasses**

Feather Reed

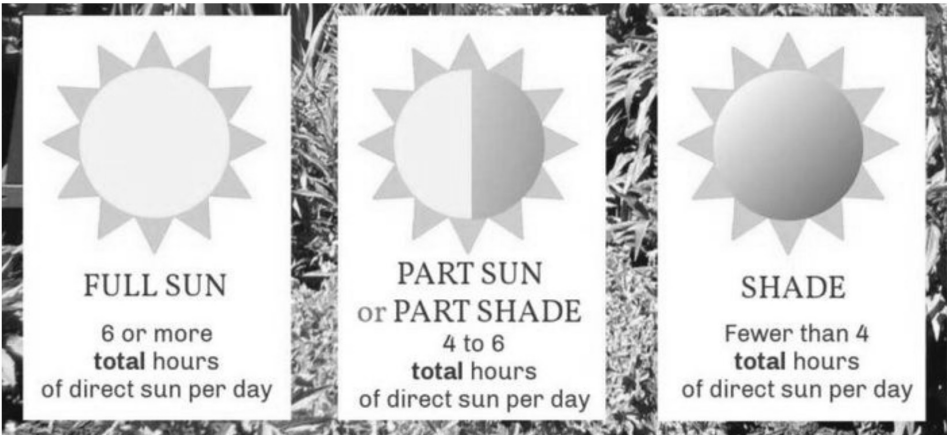
Switchgrass

Big Bluestem



# Plants for Shady Areas

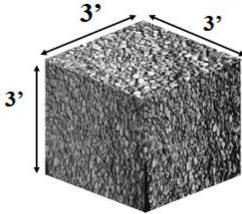
<b>Perennials</b>		<b>Deciduous Shrubs</b>	
Astillbe	Foam Flower	Annabell Hydrangea	Fineline Buckthorn
Hosta	Coralbell	Dogwood	Dwarf Burning Bush
Japanese Spurge	Lungwort	Summersweet	Viburnum
Columbine (partial)	Bleeding Heart	Dwarf Burning Bush	Alpine Currant
Ferns	Foxglove	Honeysuckle	
Lady's Mantle	Spotted Nettle	<b>Evergreens</b>	
Cranesbill (partial)	Bugleweed	Boxwood	Yew
<b>Ornamental Grass</b>		Wintecreeper	Rhododenron
Blue Fescue	Japanese Hakone Grass	Azalea	
Scotland Tufted Hair			



## Tree Color Codes – (Ribbon Colors on B&B Trees)

Shade	Trees	Ribbon Color/Pattern	Ornamental	Trees	Ribbon Color/Pattern
Birch	River	Blue	Crab	Adams	White w/ Orange Dots
Birch	White Satin	White w/ Red Stripe	Crab	Adirondack	Green and Black
Birch	Whitespire	White	Crab	Donald Wyman	White
Catalpa		Yellow & Blue	Crab	Cinderella	Blue & White
Elm	Morton Accolade	Yellow & Pink	Crab	Firebird	Yellow & Black
Elm	New Horizon	Green & Purple	Crab	Golden Raindrop	Blue & Red
Elm	Princeton	Purple & Purple	Crab	Louisa (weeping)	Pink
Ginkgo	Autumn Gold	Yellow	Crab	Marilee	Orange&Orange w White Dots
Ginkgo	Princeton Sentry	Pink & Orange	Crab	Pink Spire	Pink
Ginkgo	Magyar	White	Crab	Purple Prince	Purple & Yellow
Hackberry		Blue & Blue	Crab	Prairiefire	Orange
Hawthorn	Thornless	Black & White	Crab	Profusion	Green w/ White Stripe
Hawthorn	Washington	Yellow & Green	Crab	Red Barron	Orange w/ Black Dots
Honeylocust	Shademaster	Yellow w/ White Stripe	Crab	Red Jade (weep)	White & Red
Honeylocust	Skyline	Orange	Crab	Red Jewel	Pink & Red
Ironwood		Black & Red	Crab	Red Splendor	Blue w/ White Stripe
Kentucky	Coffee Tree	Orange & Green	Crab	Royalty	Red
Linden	American Sentry	White w/ Orange Dots	Crab	Royal Gem	Red and Yellow
Linden	Glenleven	Orange w/ Black Dots	Crab	Royal Raindrops	Red w/ Black Dots
Linden	Greenspire	Green w/ White Stripes	Crab	Showtime	Blue
Linden	Redmond	Red	Crab	Snowdrift	White w/ Red Stripe
Maple	Armstrong	Orange & White	Crab	Spring Sensation	Yellow & Pink
Maple	Autumn Blaze	Pink & White	Crab	Spring Snow	Black
Maple	Autumn Fantasy	Purple	Crab	Sugartyme	Green & Red w/ White Stripe
Maple	Brandy Wine	Black & Pink	Crab	Thunderchild	Blue & Yellow
Maple	Celebration	Pink w/ Black Dots	Hawthorn	Thornless	Black & White
Maple	Crimson King	Red, White, Blue & Black	Hawthorn	Washington	Yellow & Green
Maple	Emerald Lustre	Dark Green	Lilac Tree	Ivory Silk	Yellow & Yellow
Maple	Emerald Queen	White	Lilac Tree	Japanese	Yellow&Yellow w/ White Stripe
Maple	Fall Fiesta	Blue & Red	Pear	Autumn Blaze	Red & Black
Maple	Green Mt. Sugar	Blue & Green	Pear	Chanticleer	Blue w/ Black Dots
Maple	Marmo	Red & Black	Pear	Capital	Orange & Orange
Maple	Madador	Yellow	Pear	Cleveland	Red & Orange w/ White Stripe
Maple	Norwegian Sunset	Pink & Pink	Redbud		Pink & Purple
Maple	Red Sunset	Red & Orange	Serviceberry	Autumn Brilliance	White & Yellow
Maple	Royal Red	Red, White & Blue			
Maple	Rubrum	White w/ Red Stripe			
Maple	Sienna Glenn	Pink & White w/ Red Strip			
Maple	State Street	Red & Red			
Oak	Bur	Blue			
Oak	Heritage	White & White			
Oak	Red	Red			
Oak	White	White			

# Calculating Cubic Yardage



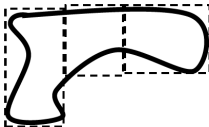
**1 CUBIC YARD = 3' x 3' x 3'**

## Average Coverage of 1 Cubic Yard

At This Depth (Inches)	Covers This Area (Square Feet)
1" Deep	300 Sq Ft
2" Deep	150 Sq Ft
3" Deep	100 Sq Ft
4" Deep	75 Sq Ft

The formula looks like this:

$$\text{Cubic Yards} = \frac{(\text{Length} \times \text{Width} \times \text{Depth})}{27}$$



If your beds have **weird shapes**, just separate them into rectangles!



(There are roughly four and a half large wheelbarrows (6 cubic foot) per cubic yard), 6.75 30-gallon drums, or 13.5 2-cubic foot bags or 40 5-gallon pails



If you have an area 100' x 4' (400 square feet), and want to put the material 3" deep:

Convert the depth into feet by dividing 3 by 12 (12"=1', so 3"=0.25').

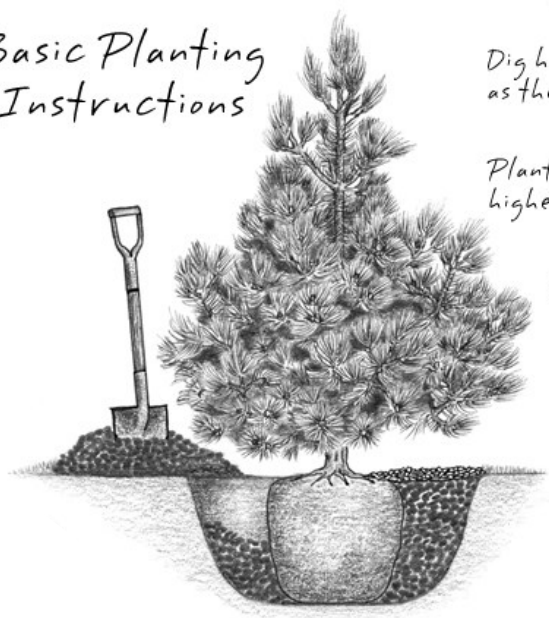
Multiply the square footage area by the depth, 400x0.25=100.

Divide the total cubic footage by 27 to convert it to cubic yardage 100/27=3.71 (Round up to 3 ¾ cy).

This area needs roughly 3.75 cubic yards of stone/mulch/soil. Using the chart on the left, 1 yard covers 100 sf at 3" deep, so 400 sf so you would need 4 cubic yards.

There are converters online or apps available to help you calculate how much material you would need, or just give us a call or email!

## Basic Planting Instructions



Dig hole twice as wide  
as the root ball.

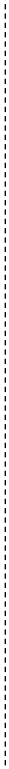
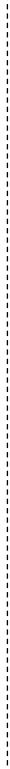
Plant even with or slightly  
higher than existing ground level.

Back fill with the same soil.

Soak soil by watering  
deep and long.

Prevent the root ball  
from drying but do not  
keep it too wet.

**Willems Landscape Service, Inc.**  
**3661 Creamery Rd.**  
**De Pere, WI 54115**



# WILLEMS



LANDSCAPE SERVICE, INC.

